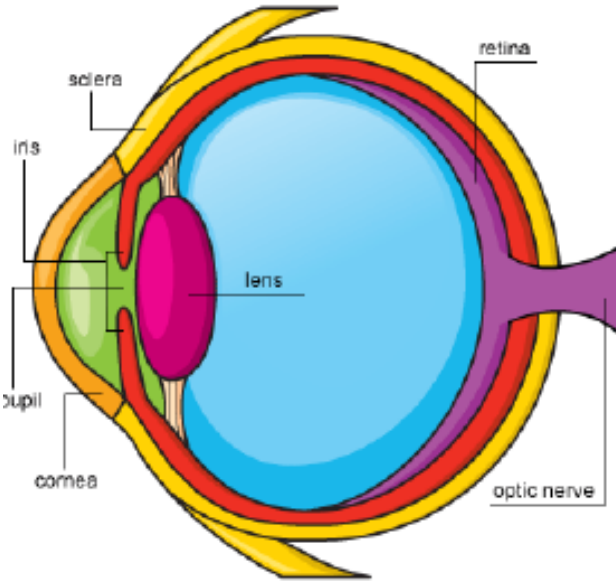


# Highwood School—Year 6—Summer 2-Light

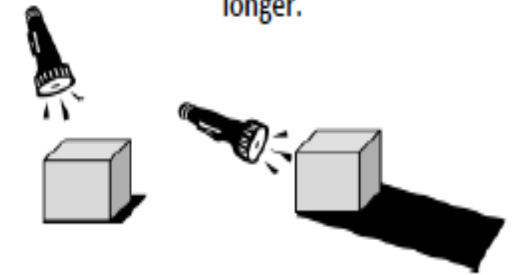


DIAGRAM OF THE EYE



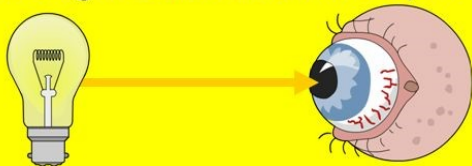
Key Words	Definition
Light Source	An object that produces its own light (e.g sun, fire) .
Reflection	When a light hits a surface and 'bounces' off.
Refraction	When light passes though a different object and it's direction changes.
Shadow	A dark area or shape caused by the blockage of light.

As the light source moves higher in relation to the object, the shadow gets shorter. As the light source moves lower, the shadow gets longer.



## How do we see things?

An object that gives out light is described as **luminous**. How does light from a luminous object such as a light bulb reach the eye?



Light travels in a straight line directly into the eye.

An object that does not give out light is **non-luminous**. How does your eye see a non-luminous object such as a comb?

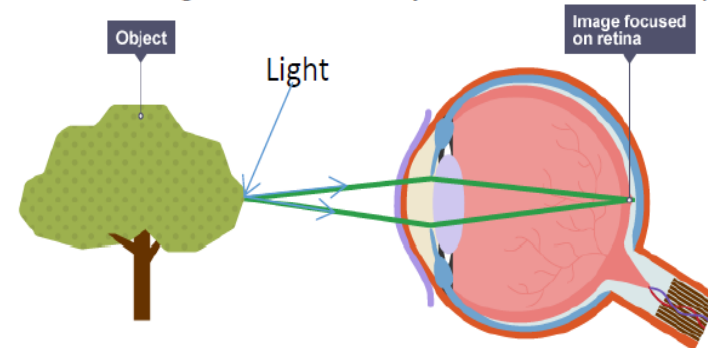


Light hits the comb and some of it is reflected into the eye.

## Did you Know?

That light appears to travel in straight lines

That objects can be seen when light reflects off objects and enters the eye.



That shadows are created when objects block the pathway of light.

That the size and clarity of shadows can be affected by altering the position of the light source.